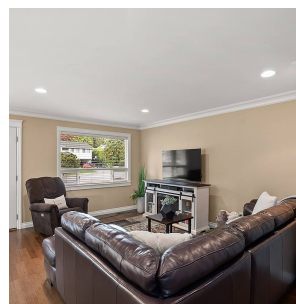
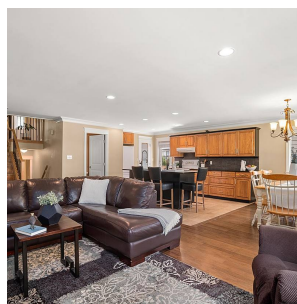
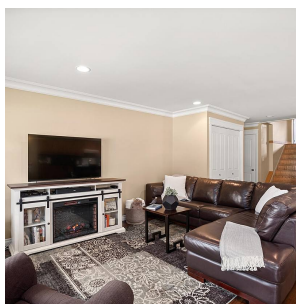


# 17201 Jersey Drive, Surrey

\$1,599,000



Jersey Hills fabulous! Situated on quiet street in family oriented neighbourhood, this 4 bdrm, 4 bath home has had regular updating thru the years. Offering an open concept great room design complete w/ lrg kitchen island, granite counters & walk in pantry. Recent updates: roof, deck, furnace in 2021, HW tank, fence in 2020, in past decade: exterior face-lift, windows, doors, bthrms, crown mouldings, flooring & lighting. 2 primary bdrms w/ ensuites. Lower primary features 4 pce ensuite & a 12'x 11'6 combination walk-in closet/dressing rm/flex space. Oversize 26'5 x 23'2 garage w/ insulated 8' high doors will fit lrgr vehicles, workshop, storage. George Greenway & Lord Tweedsmuir catchments. Easy commuter access in all directions, shops nearby, walk to park & transit. Fab street appeal!

## KEY INFORMATION

MLS® R2688035

Residential Detached

Cloverdale

5 Bedrooms

4 Bathrooms

2,190 SF

8,422 SF Lot

## FEATURES

Year Built: 1975

Listed By: RE/MAX Performance Realty

rennie