

301 1955 Suffolk Avenue, Port Coquitlam

\$699,000



UNBELIEVABLY STUNNING 2 STOREY PENTHOUSE WITH 691 SQ FT ROOF TOP SUNDECK, & 16 ft Vaulted Ceilings! Gorgeous 3 BDRM, 2 FULL Baths, 1,403 sq ft, beautifully renovated Penthouse loaded with desirable features. BRIGHT Formal dining & living with 16FT ceilings, w/o balcony, stone faced gas fireplace, Sit-up bar, open concept Kitchen. Engineered H/W Flooring, 4 PC Bath, laundry & storage rm. Massive windows lead up stairwell to 2 more BDRMS. Huge Master BDRM, with his/her clsts, peak-a-boo view of living area. DBL Slider lead to PRIVATE S. Facing 691 Roof Top SUNDECK, Jack/Jill access to luxurious ensuite bath: deep soaker tub & SEP shower. Walking distance to shopping, parks, trails, all level schools. You don't want to miss, A MUST see! OPN HSE MAY 14/15th 2:30pm-5:30pm & SUN 11:30am-2:30pm.

KEY INFORMATION

MLS® R2688265

Residential Attached

Glenwood

3 Bedrooms

2 Bathrooms

1,403 SF

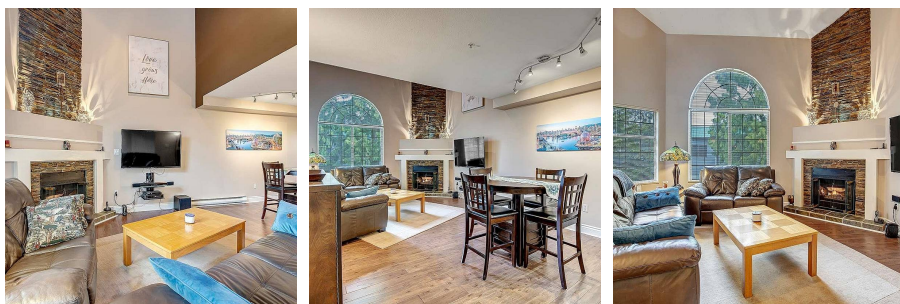
\$563.68 Maintenance Fees

FEATURES

Year Built: 1991

Views: 691 SQ FT ROOF TOP DECK- MTNS

Listed By: eXp Realty



rennie