

702 5629 Birney Avenue, Vancouver

\$799,900



Welcome to Ivy on the Park by Wall Group of Companies! Visit our move-in ready home at the most luxurious residential development in Wesbrook Village. Conveniently located within the tranquil surroundings of forest and parks, just minutes away from the University of British Columbia campus, and within walking distance to everyday conveniences. This gorgeous NW corner home is brand new; beautifully finished and equipped with in-suite air-conditioning/heating. Parking and storage locker included. Enjoy a wide range of amenities including daily concierge service, resident building manager, club lounge and outdoor BBQ area, music lounge, meeting room, fitness facilities, and outdoor garden.

KEY INFORMATION

MLS® R2688404

Residential Attached

University

1 Bedroom

1 Bathroom

580 SF

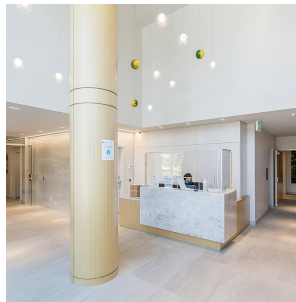
\$338.91 Maintenance Fees

FEATURES

Year Built: 2021

Views: City and Forest

Listed By: rennie & associates realty ltd.



Mimi Chau PREC*
604.375.6288
mchau@rennie.com
rennie.com/mimichau

rennie