

216 2565 Campbell Avenue, Abbotsford

\$429,000



Abacus Uptown located close to historic downtown Abbotsford. Lots of natural light with the South/West exposure. Open floor plan with one bedroom plus open office/den space. Quartz kitchen counter tops, center Island, in-suite laundry and modern colors. Private covered deck on the quiet side of the building. Secure underground parking, storage unit and fitness center. Well run building with pets and rentals allowed. Walking distance to shopping, restaurants and recreation. Call today for your private viewing!

KEY INFORMATION

MLS® R2688050

Residential Attached

Central Abbotsford

1 Bedroom

1 Bathroom

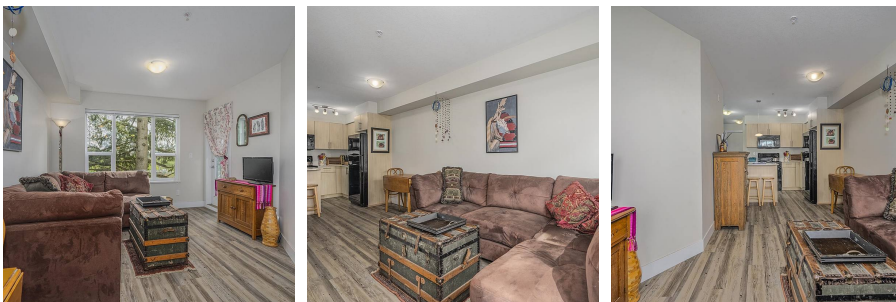
593 SF

\$189.64 Maintenance Fees

FEATURES

Year Built: 2014

Listed By: Vybe Realty



rennie