

# 601 298 E 11th Avenue, Vancouver

\$849,000



Sunny and bright, south facing 2 bedroom, 2 bathroom plus den at The Sophia in ever popular Mount Pleasant. You'll love the south facing balcony with beautiful views of the surrounding neighbourhoods, green tree tops and blue sky. Excellent layout with no wasted space, separated bedrooms, large den/solarium and insuite storage room. Also featuring hardwood floors, high ceilings, loads of windows, cozy electric fireplace, gas stove and large kitchen island. Storage locker and 1 parking included. Pets and rentals welcome. Great concrete mid-rise building (96 Walk Score) with proactive strata located just steps to Main and Broadway shopping, restaurants and new Skytrain station.

## KEY INFORMATION

MLS® R2688671

Residential Attached

Mount Pleasant

2 Bedrooms

2 Bathrooms

868 SF

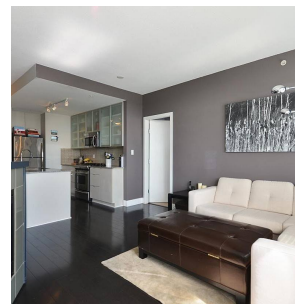
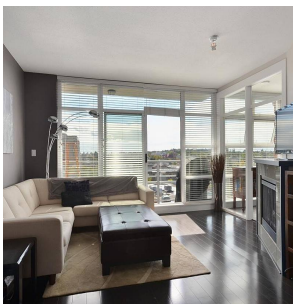
\$478.47 Maintenance Fees

## FEATURES

Year Built: 2008

Views: CITY

Listed By: Stilhavn Real Estate Services



**rennie**