

9 8889 212 Street, Langley

\$899,900



Welcome to Garden Terrace - Walnut Grove's popular 55+ complex. This bright one storey END UNIT has one of the largest floor plans in the strata with over 1500 square feet of living space. This suite has a great layout that features both a living room and family room; two bedrooms with a master ensuite and a DOUBLE CAR GARAGE. Mountain views from the master bedroom. The complex is well managed with a recreation center for social events. Prime location offers quick access to shops & transit, community centre & parks in this great community of like minded people.

KEY INFORMATION

MLS® R2688701

Residential Attached

Walnut Grove

2 Bedrooms

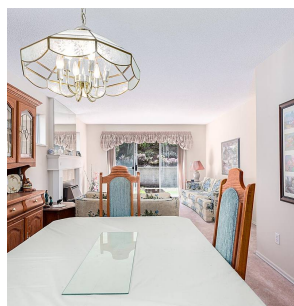
2 Bathrooms

1,553 SF

FEATURES

Year Built: 1989

Listed By: Keller Williams Elite Realty



rennie