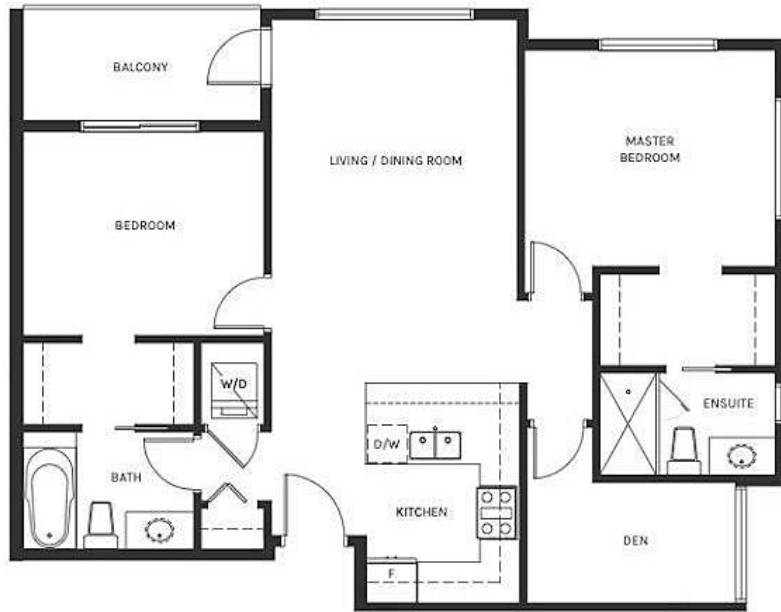


202 11718 224 Street, Maple Ridge

\$634,900



Only 5% Initial Deposit! 977 sqft! Beautiful CORNER unit and LARGE 2 bed and 2 bath PLUS Den in the heart of Maple Ridge. Walking distance to Walmart, westcoast express, restaurants, banks and more! Interior finishes incl. real wood cabinetry, waterfall stone countertops, modern bathrooms, 9' ceilings and attention to detail everywhere you turn. 1 parking and 1 storage and upgraded Air conditioning included. Enjoy the rooftop amenity lounge w/gas fire pits, BBQ and landscaping to enjoy the amazing vistas of the Fraser River & Mt. Baker. Please CONTACT Listing REALTOR for more details and showings.

KEY INFORMATION

MLS® R2688748

Residential Attached

East Central Maple Ridge

2 Bedrooms

2 Bathrooms

977 SF

\$249.61 Maintenance Fees

FEATURES

Year Built: 2022

Views: North

Listed By: Nationwide Realty Corp.

