

# 16525 21a Avenue, Surrey

\$1,680,000



This move-in, family ready house located in an ideal location in South Surrey. Steps from all the amenities: Edgewood Park, elementary school, high school, Grandview Aquatic Centre, and Grandview corner shopping mall. Close to Southridge private school and easy access to Hwy 99 and Vancouver. Quality built with exterior Hardie siding & a mix of natural & cultured stone accents. 4 bdrms/3.5 bath, 10 ft ceilings, open-concept floor plan, heat pump, central A/C, forced air throughout, fully wired security camera system with recording and remote access, wired enterprise WIFI system, fenced yard with gas BBQ hook up. Spacious basement with kitchen fully roughed-in. First Open house May 21 & 22

## KEY INFORMATION

MLS® R2688622

Residential Detached

Grandview Surrey

4 Bedrooms

4 Bathrooms

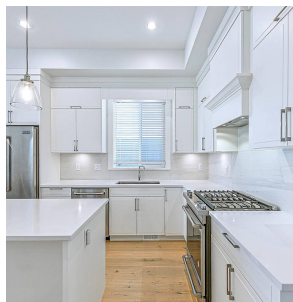
2,560 SF

2,906 SF Lot

## FEATURES

Year Built: 2019

Listed By: Homeland Realty



rennie