

# 111 423 6th Street, West Vancouver

\$2,368,900



Welcome to Executive on the Park, a striking new landmark of 88 condos & townhomes surrounded by lush landscaping and an intimate parkette at the gateway of West Vancouver. The seawall and all of life's amenities at Park Royal are at your doorstep. This spacious 2 bed, 2.5 bath 2 level townhome offers 1508 sf of interior space with a 186 sf patio. Expansive kitchen features quartz counters with waterfall island, integrated Fisher & Paykel appliance package including a gas range, and sleek cabinetry. This unit features 2 bedrooms on second floor with large ensuite. Exclusive amenities include 24/7 concierge, Range Rover town car service, building manager, gym, common room; everyday living feels like a five star hotel! Includes 1 parking, 1 bike locker.

## KEY INFORMATION

MLS® R2688567

Residential Attached

Park Royal

2 Bedrooms

3 Bathrooms

1,508 SF

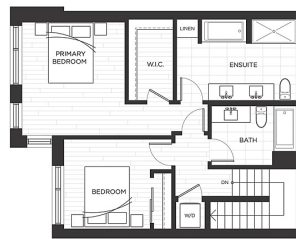
## FEATURES

Year Built: 2024

Listed By: Unilife Realty Inc.



Main Level



Upper Level

