

610 5933 Cooney Road, Richmond

\$738,000



Richmond Prime location, Step to the Canada Line Brighthouse Station. step to supper market and restraint, This bright, spacious corner unit has 2 bedroom plus big den (could use as bedroom size) with 2 full bathrooms. Step to anything you need, including Lansdowne Mall (T&T), Richmond Centre, Price Smart Foods, Public Market, banks and restaurants. Rentals and pets are allowed. do not miss.

KEY INFORMATION

MLS® R2688692

Residential Attached

Brighthouse

2 Bedrooms

2 Bathrooms

898 SF

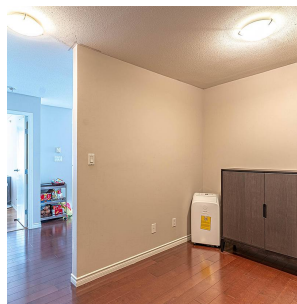
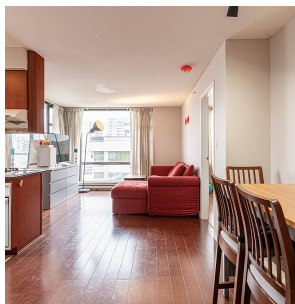
\$421.04 Maintenance Fees

FEATURES

Year Built: 2003

Views: City & Mountain

Listed By: Luxmore Realty



rennie