

148 488 Furness Street, New Westminster

\$1,269,900



Located in the historic heart of Queensborough in New Westminster, Portside is a collection of 170 move-in ready townhomes and duplexes situated on the Fraser River, overlooking downtown New Westminster. Homes range from 2 to 4 bedrooms and have 2-car garages, vaulted ceilings in the master bedrooms, and spacious living areas. Your new favourite shops, restaurants, and parks are right here in the Queensborough community and just across the river in New Westminster. These homes have space to play and room to grow with spacious floor plans and outdoor entertainment areas. Call to book a private showing.

KEY INFORMATION

MLS® R2688653

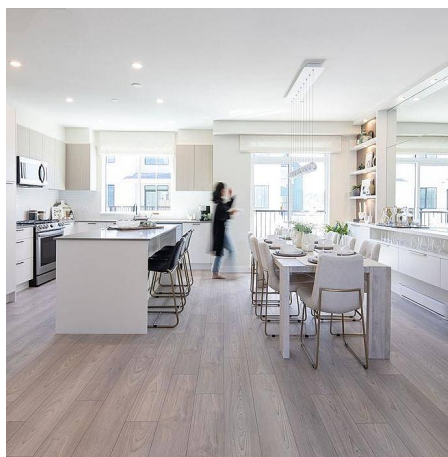
Residential Attached

Queensborough

4 Bedrooms

4 Bathrooms

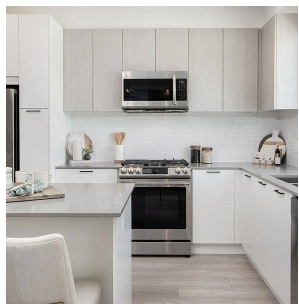
1,578 SF



FEATURES

Year Built: 2023

Listed By: Anthem Realty Ltd.



rennie