

# 12 5648 Promontory Road, Chilliwack

\$829,900



**RARE FIND!** Welcome to the Gables at Copper Creek! Gorgeous 4 bed/4 bath, 2686 sqft end unit w/ unauthorized in-law suite! Meticulously maintained + nicely updated with quartz counters, ss appliances up + down, and fresh paint. Main level boasts open concept living with access to a balcony, 3 bed up w/ mbdm w/ walk-in closet, below is perfect for the in-laws, nicely done kitchen, n/gas fireplace with a covered patio and access to the backyard w/ garden beds. Some features include central AC, 2 car garage with an additional 2 car parking in front, wired for home theater/ceiling speaker + fenced yard. This well run complex is a quiet development located close to promontory elem school and is walkable to trails, amenities, and bus stop! Family friendly, pets allowed with restrictions, no rentals.

## KEY INFORMATION

MLS® R2688854

Residential Attached

Chilliwack

4 Bedrooms

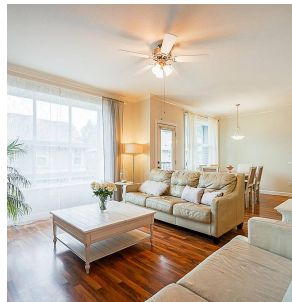
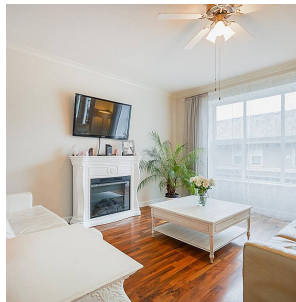
4 Bathrooms

2,686 SF

## FEATURES

Year Built: 2007

Listed By: Pathway Executives Realty Inc.



**rennie**