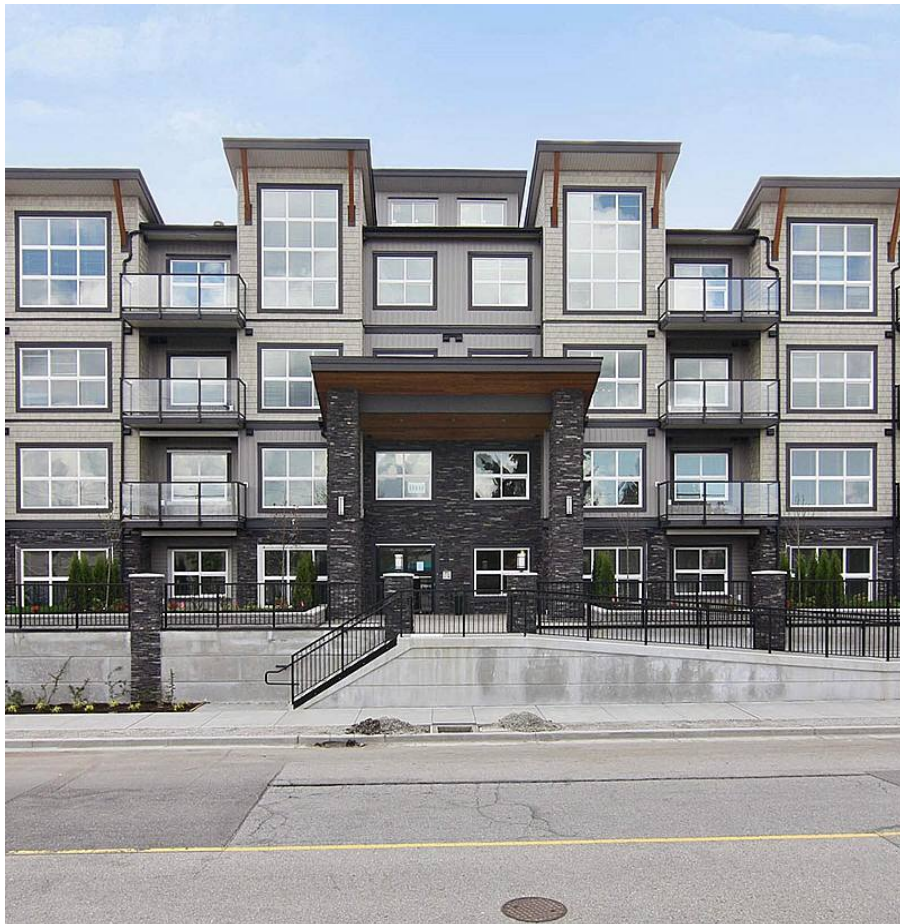


108 20630 Douglas Crescent, Langley

\$649,999



Beautifully maintained building in the heart of downtown Langley. Down a quiet street but close to every amenity you could ever need. The extremely functional layout of this 2 bedroom 2 bathroom corner unit boasts tons of natural light and entertainment space. 9' ceilings, crown mouldings and generous storage space make this unit an absolute must see. Book your showing today - this will not last long!

KEY INFORMATION

MLS® R2688782

Residential Attached

Langley City

2 Bedrooms

2 Bathrooms

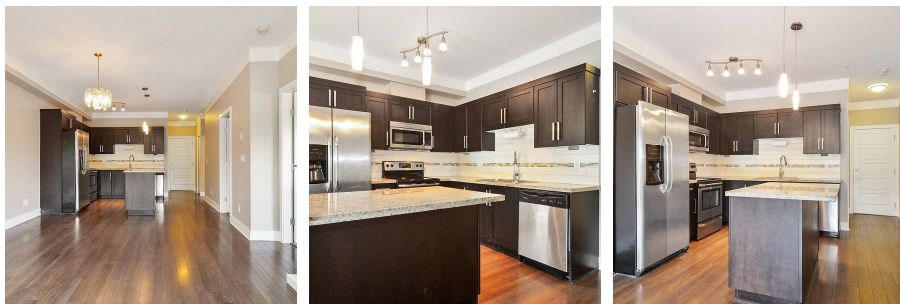
978 SF

\$347.30 Maintenance Fees

FEATURES

Year Built: 2011

Listed By: Homelife Benchmark Realty Corp.
(White Rock)



rennie