

421 10838 Whalley Boulevard, Surrey

\$749,995



HUGE 933 sqft and As good as New! Perfect for an investor as its currently tenanted for \$2400/month. This beautiful 2 bed and 2 full bath, CORNER unit is still in brand new condition without any flaws. 9' foot ceilings and big and bright with tons of natural light. It also has a nice gym and a party room with billiards and a full kitchen. 8 minute walk to the skytrain, grocery, restaurants, mall, school, university and the list goes on.

KEY INFORMATION

MLS® R2689583

Residential Attached

Bolivar Heights

2 Bedrooms

2 Bathrooms

933 SF

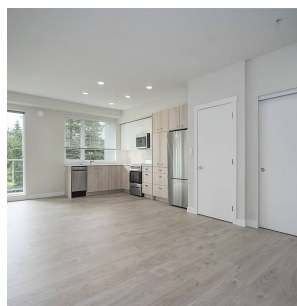
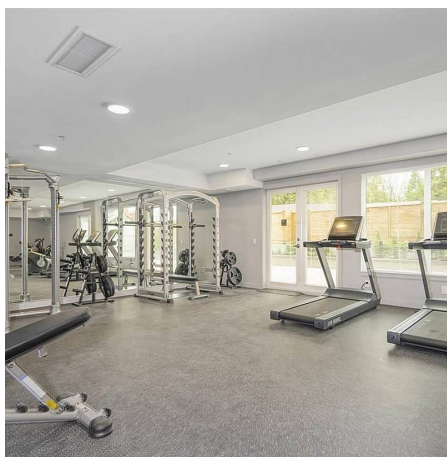
\$344.28 Maintenance Fees

FEATURES

Year Built: 2021

Views: Open Yard

Listed By: Nationwide Realty Corp.



rennie