

51 15840 84 Avenue, Surrey

\$899,000



Rare find, Very well maintained 2 level bright corner Townhome, 4 parking including side by side double garage. Huge master bedroom with his and her closet. Decent size bedrooms. Spacious dining room & living room. Fenced backyard. Central Fleetwood location close to Public transit, shopping, Library, seniors center, Rec center and both level schools. Showing Saturday-Sunday by appoints only.

KEY INFORMATION

MLS® R2689730

Residential Attached

Fleetwood Tynehead

3 Bedrooms

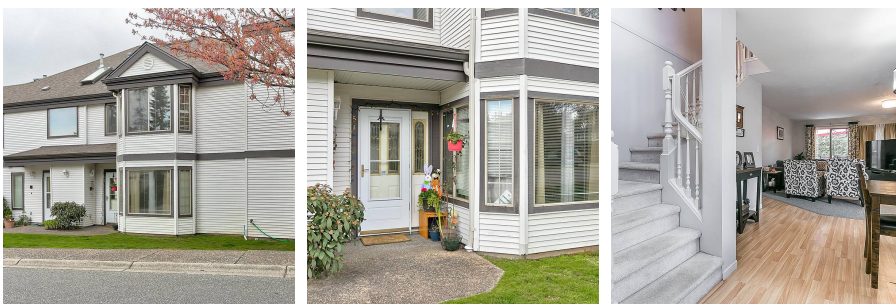
3 Bathrooms

1,741 SF

FEATURES

Year Built: 1993

Listed By: Coldwell Banker Universe Realty



rennie