

# 2004 E 12th Avenue, Vancouver

\$1,878,000



GREAT INVESTMENT and HOLDING PROPERTY with "RM-1 IN MULTIPLE DWELLING ZONING" AND GREAT MONTHLY INCOME! Completely flat corner lot right next to Trout Lake. 33'x122' corner lot! South facing & just a short walk to Commercial Drive, Skytrain, Safeway, Trout Lake, restaurants or a 10-minute drive to downtown. 3 large bedrooms on top 2 floors with 1 more downstairs, a 2nd kitchen & separate entrance. Simply an incredible investment opportunity with this amazing location. Don't miss out on your chance to own this property with loads of potential!

## KEY INFORMATION

MLS® R2689746

Residential Detached

Grandview Woodland

4 Bedrooms

2 Bathrooms

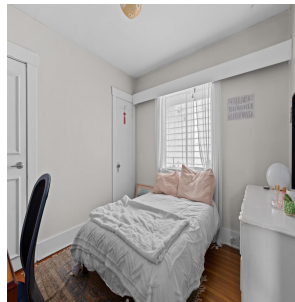
2,331 SF

4,026 SF Lot

## FEATURES

Year Built: 1929

Listed By: Angell, Hasman & Associates Realty Ltd.



rennie