

# 35 8590 Sunrise Drive, Chilliwack

\$719,000



Climb to new heights with this Chilliwack Mountain gem on south side boasting panoramic views! Elegant comfort in this spacious townhome offers lots of natural light amongst vaulted ceilings in living kitchen & family rooms. Kitchen island provides extra storage & centrality for casual gatherings or entertain on 40' deck directly off family room! Main bath has a walk in bathtub while primary ensuite impresses with glass surround walk in shower. All of the the above including laundry on one level providing for max accessibility right off 2 car garage. Think lofty living with its unique 12' ceilings on lower level (roughed in plumbing) potential work shop gym theatre office extra bedrooms / 2 sets of sliding doors open onto ground level green space with an additional 40' patio. New roof!

## KEY INFORMATION

MLS® R2689764

Residential Attached

Chilliwack

2 Bedrooms

2 Bathrooms

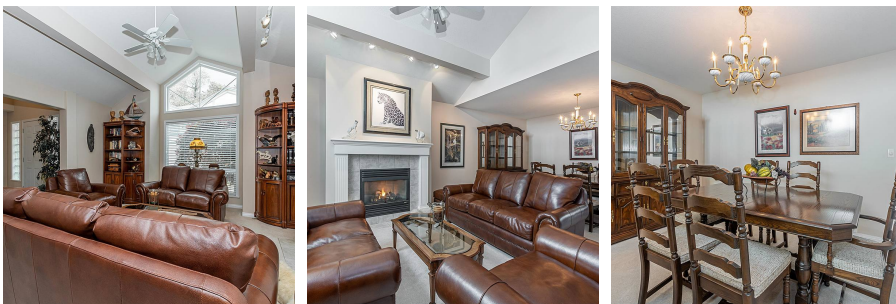
3,300 SF

## FEATURES

Year Built: 2001

Views: Mountains & valley

Listed By: RE/MAX Nyda Realty Inc.



rennie