

12128 96 Avenue, Surrey

\$1,799,900



DEVELOPMENT POTENTIAL!! Potential to build 3 story triplex or 3 row homes. Great holding property in a desirable neighbourhood in Surrey with good rental income. Development application submitted for the two neighbouring properties for 8 row homes! OCP calls for multi unit housing (triplex/ rowhomes). Great project for a savvy investor and builder looking for a turnkey profitable build. Don't miss this opportunity to build on 9906 sqft lot with back lane access, central location, close to public transit , LA Matheson Secondary & Kirkbride Elementary.

KEY INFORMATION

MLS® R2689732

Residential Detached

Queen Mary Park

3 Bedrooms

1 Bathroom

935 SF

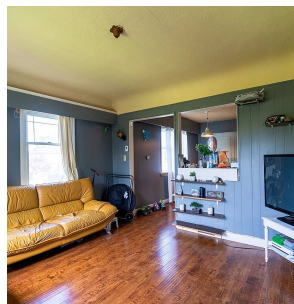
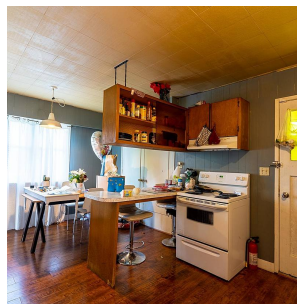
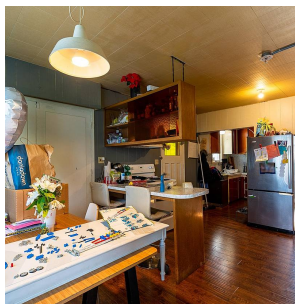
9,906 SF Lot



FEATURES

Year Built: 1937

Listed By: Keller Williams Ocean Realty.



rennie