

306 19945 Brydon Crescent, Langley

\$479,000



The Atrium at Langley: a collection of modern urban living spaces in the heart of downtown Langley City. Minutes to shopping and future Skytrain station, close to Nikomekl Trail, Linwood Park and Brydon Park. Stainless steel appliances, engineered floors, quartz countertops. Building includes amenities such as clubhouse, media room, fitness centre, and more.

KEY INFORMATION

MLS® R2689303

Residential Attached

Langley City

1 Bedroom

1 Bathroom

611 SF

\$0.00 Maintenance Fees

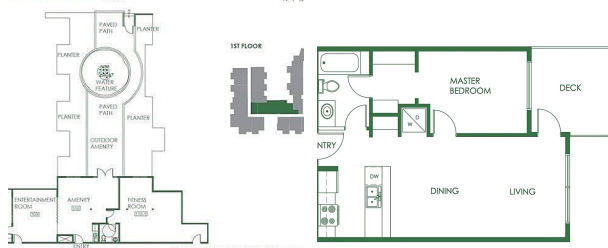
FEATURES

Year Built: 2022

Listed By: Metro Edge Realty



MENITIES ENTERTAINMENT • FITNESS ROOM • MEETING ROOMS
1000 SQ.FT. ATRIUM



rennie