

290 Colter Road, Columbia Valley

\$4,300,000



The 42.3 acre of large flat land is a true paradise in Columbia Valley with absolute privacy & beauty, close to Cultus Lake & US border, surrounded by emerald forest, splendid mountain & valley view from the 3000 sqft custom built 4 bdrm & 3 bath home. Attached double garage, 30'X52' detached shop & a storage shed there for your toys or operation equipment. Great investment potential for your holding or farming of nursery, vegetable, blueberry /raspberry, cattle/sheep/horse or bring your idea.

KEY INFORMATION

MLS® R2689567

Residential Detached

BC

4 Bedrooms

3 Bathrooms

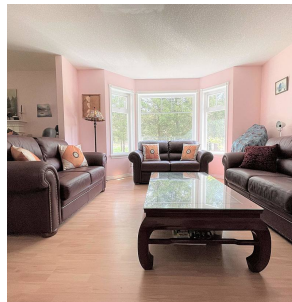
3,028 SF

FEATURES

Year Built: 1994

Views: MOUNTAIN, VALLEY VIEWS

Listed By: Royal LePage Wheeler Cheam



rennie