

E305 8929 202 Street, Langley

\$559,900



This 2 bed, 2 bth home in The Grove, offers beautiful mountain views, with an 868 sq ft thoughtfully laid out floor plan! Can we talk about the location? Absolutely EVERYTHING is right outside your door including shopping, restaurants, quick freeway access, parks, recreation and more! Freshly painted & offering an open concept, the kitchen includes a breakfast bar, granite, S/S appliances and leads to the dining area and living room w/ fireplace. The 2 well sized bdrms are on opposite sides, w/ master boasting a walk in closet, and 4 pc ensuite. There is an additional 3 pc main bath and in suite laundry. 1 parking, 1 storage, 2 pets and rentals allowed! Building E is the quietest location in the whole complex. Call today to view!

KEY INFORMATION

MLS® R2689929

Residential Attached

Walnut Grove

2 Bedrooms

2 Bathrooms

868 SF

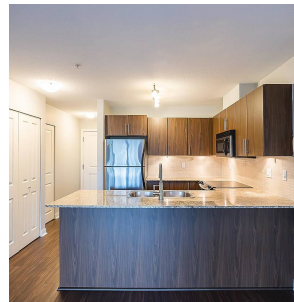
\$440.81 Maintenance Fees

FEATURES

Year Built: 2008

Views: Mountain

Listed By: RE/MAX Treeland Realty



rennie