

1 16433 19 Avenue, Surrey

\$949,000



MOVE IN READY! Welcome to Berkley Village, the townhome with the best location and value in the heart of South Surrey. This is the perfect townhome with easy access to the best and newest schools, restaurants, shops, 10minutes away from White Rock beach. This is the perfect home for a new or growing family or an investor! This 3 bed+ den CORNER UNIT provides an open concept floor plan and plenty of natural light with a modern home design with the best finishes. The den can easily be used as a 4TH BEDROOM, office space or flex room for your ideas. This unit provides easy access to ALL major routes and minutes from highway access. Amenities include a 3-levelclubhouse boasting a gym, yoga room, board room, craft room, lounge & guest suite. OH - June 25-26 Saturday 1-4pm & Sunday 3:30-5:30pm.

KEY INFORMATION

MLS® R2689969

Residential Attached

Pacific Douglas,

3 Bedrooms

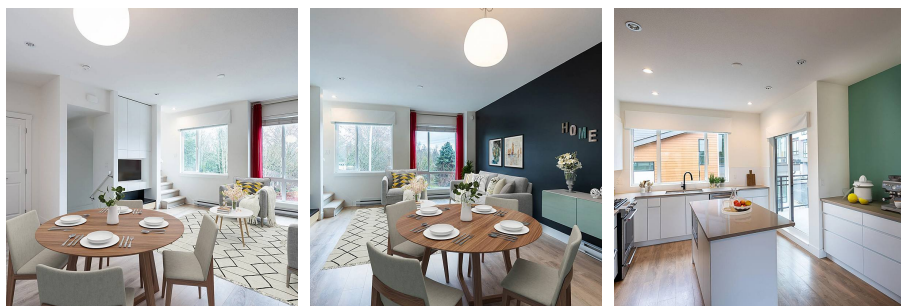
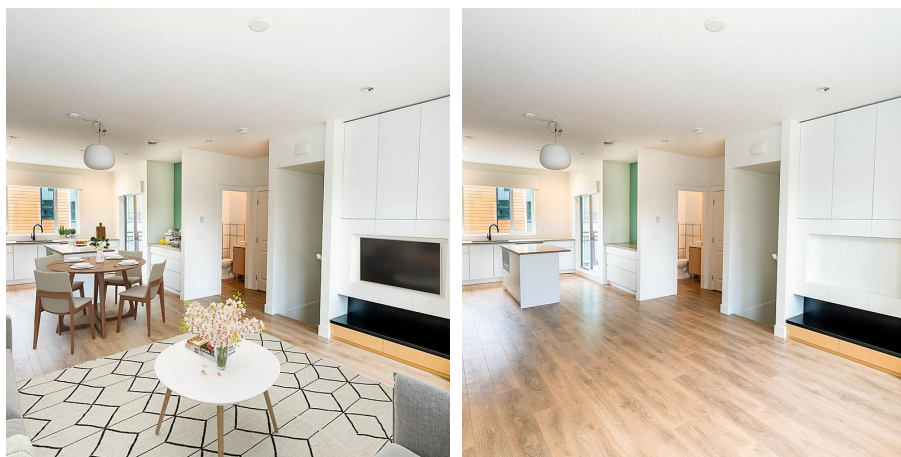
3 Bathrooms

1,421 SF

FEATURES

Year Built: 2019

Listed By: Keller Williams Ocean Realty.



rennie