

# 1879 Westbury Avenue, Abbotsford

\$1,199,000



Your first home and/or an INVESTMENT OPPORTUNITY! 2172 sqft - 2-storey home in Central Abbotsford sitting on a 6,760 sqft lot. Located close to the hospital, shopping, parks, recreation, dining & HWY1 access. Main level offers 3 good sized bedrooms and a 4-piece bathroom with an enclosed tub/shower, double sinks & under-cabinetry storage. Upstairs kitchen has stacked laundry for convenience. 2-bedrooms downstairs with 3-piece bathroom, private laundry and separate entrance. Large kitchen below with white cabinets & appliances. Large 2-tiered sundeck leading into the very spacious, fenced backyard.

## KEY INFORMATION

MLS® R2690059

Residential Detached

Central Abbotsford

5 Bedrooms

2 Bathrooms

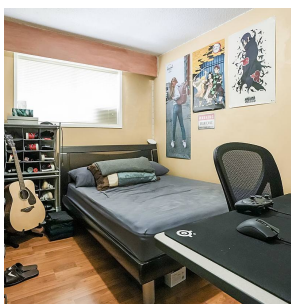
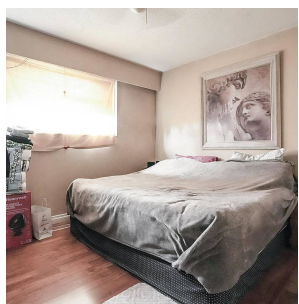
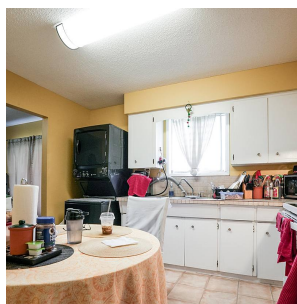
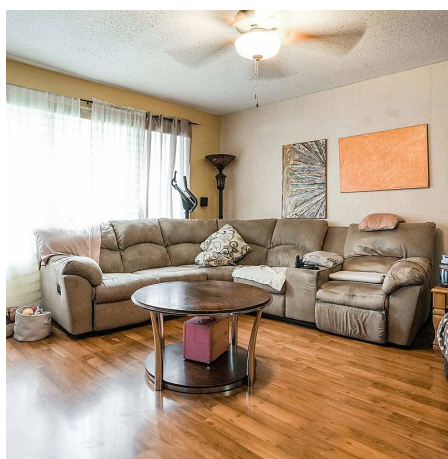
2,172 SF

6,760 SF Lot

## FEATURES

Year Built: 1973

Listed By: RE/MAX Blueprint Realty



rennie