

# 7b 6128 Patterson Avenue, Burnaby

\$839,000



Rare available, facing Central Park, centrally located, close to all amenities, that city can offer. Large 2BDR - 2BTH NW facing unit at the Grand Central Park Place. Nicely renovated with the new kitchen, laminated floor, SS appliances, light fixtures and more.9" ceilings, practical layout with the access to a large covered balcony overlooking Central Park. 2 parking, storage locker. Gas fireplace(gas and hot water included in the monthly fee). Great amenities include private tennis court, caretaker, indoor pool, hot tub, sauna, gym, library. Walking distance to the Metrotown shopping, Sky Train station, restaurants ets. Showing Friday 4-6, Saturday 1-4, by appointment.

## KEY INFORMATION

MLS® R2689649

Residential Attached

Metrotown

2 Bedrooms

2 Bathrooms

1,028 SF

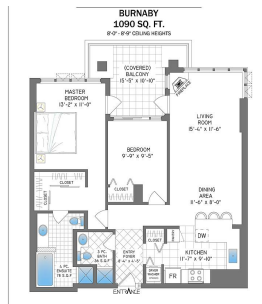
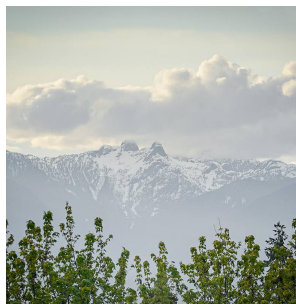
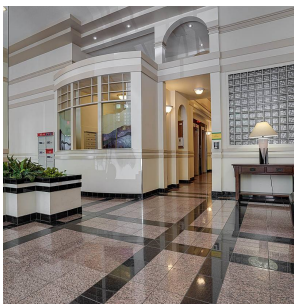
\$453.51 Maintenance Fees

## FEATURES

Year Built: 1992

Views: CENTRAL PARK, MOUNTAINS

Listed By: Royal LePage West Real Estate Services



rennie