

3722 155 Street, Surrey

\$2,188,000



Fabulous ROSEMARY WYND - this meticulously maintained and cared family home set on private 6000+ sq. ft lot with 5 bedrooms and 3 Bath rooms. This gorgeous, 2 storey with unfinished basement, offers an open floor plan with formal living room, dining room and family room, decent size east facing back yard. Un-finished basement with separate entrance including rough in kitchen and bathroom, large space ready for your ideas with 2-bedroom suite potential. Walking distance to schools, park and Morgan Creek Golf Course. Minutes driving to the shopping mall and highway. Great Catchment school: Rosemary Heights Elementary & Grandview Heights Secondary. A Must See!

KEY INFORMATION

MLS® R2690160

Residential Detached

Morgan Creek

5 Bedrooms

3 Bathrooms

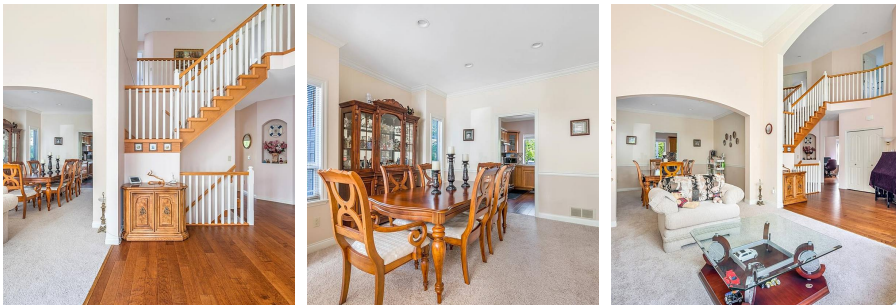
4,116 SF

6,120 SF Lot

FEATURES

Year Built: 1999

Listed By: RE/MAX Westcoast



rennie