

# 46408 Topley Avenue, Chilliwack

\$949,900



Welcome to this beautiful family home in the highly sought after neighbourhood of Fairfield Island! This 4 bedroom/2 bathroom home is close to parks (right in your backyard!), schools, shopping, District 1881 & more! Great, family friendly layout with 3 bedrooms up, built in cabinets surrounding the cozy gas fireplace and beautifully updated kitchen featuring white cabinetry, stainless steel appliances & stunning tile backsplash with access to the covered deck space, perfect for year round use! Downstairs there is a spacious rec room, 4th bedroom & workshop space that opens up to your backyard oasis with plenty of room for a garden and Guinet Park right behind you! Oversized driveway with room for RV parking. Other updates over the years include windows, flooring, HWT & roof.

## KEY INFORMATION

MLS® R2690217

Residential Detached

Chilliwack

4 Bedrooms

2 Bathrooms

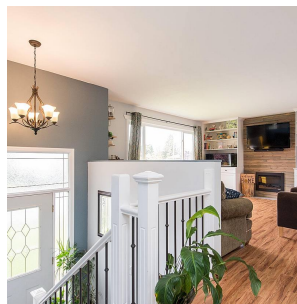
2,569 SF

## FEATURES

Year Built: 1975

Views: Park

Listed By: Century 21 Creekside Realty



rennie