

1103 133 E Esplanade, North Vancouver

\$2,498,000



This waterfront luxury 2 bedroom PENTHOUSE is located in a convenient & vibrant neighbourhood of Lower Lonsdale at the Pinnacle Residence at The Pier. Pinnacle Residences offers only 79 homes that are well maintained and professionally managed. Enjoy stunning views of the water, Stanley park, Lions Gate Bridge and Downtown Vancouver. This is a prime location just minutes away from Lonsdale Quay Market, the seabus, restaurants, coffee shops and parks. Living in air conditioned comfort with high end finishing including Bosch and Leibher appliances. This penthouse offers a 511sqft private roof deck with gas and water hookups. Enjoy Full privileges at the Pinnacle Pier Hotel's pool, fully equipped gym, and steam room.

KEY INFORMATION

MLS® R2690317

Residential Attached

Lower Lonsdale

2 Bedrooms

2 Bathrooms

1,236 SF

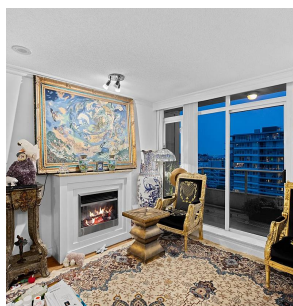
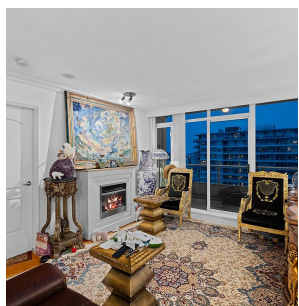
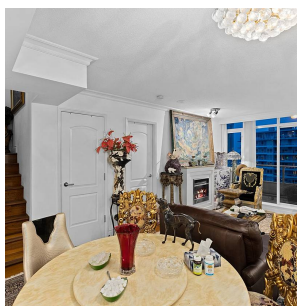
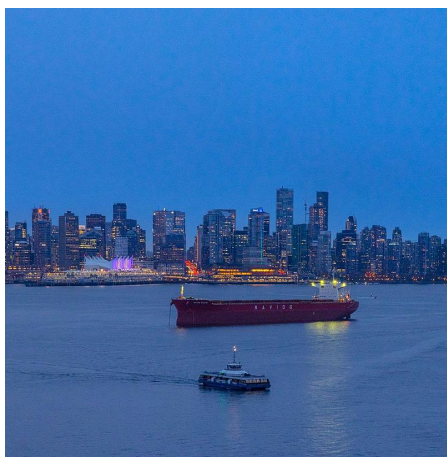
\$716.00 Maintenance Fees

FEATURES

Year Built: 2010

Views: Water, City & Mountains

Listed By: Behroyan & Associates Real Estate Services



rennie