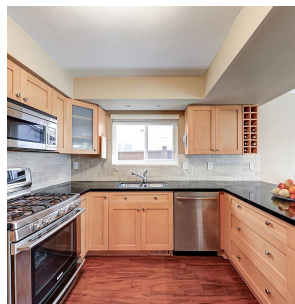
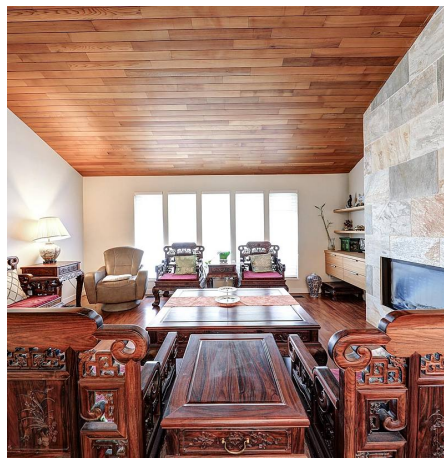
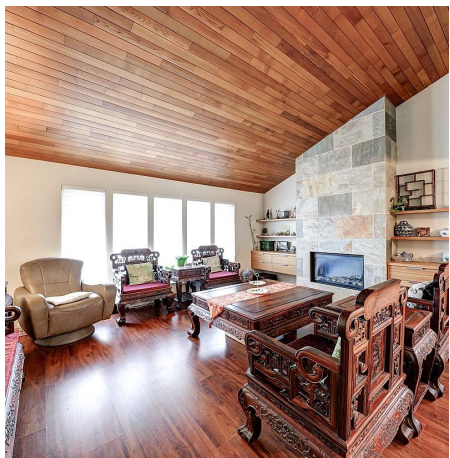


10371 Hollymount Drive, Richmond

\$1,798,000



Meticulously well-maintained family home in the quiet neighbourhood of Holly Park area in Steveston. The house receives lots of natural light and sunshine, especially in the family room area, which opens to the beautiful patio and private fully fenced backyard. The house features many updates over years, including kitchen cabinets and appliances, bathrooms, gas fireplace, furnace, in-ground sprinkler etc. Walking to school and playgrounds within 5 minutes. McKinney Elementary and Steveston-London Secondary catchment. Close to shops, transit, bike lane, and Steveston Village. Quality home and ready to move in. Must see!

KEY INFORMATION

MLS® R2691261

Residential Detached

Steveston North

3 Bedrooms

3 Bathrooms

2,000 SF

4,000 SF Lot

FEATURES

Year Built: 1977

Listed By: LeHomes Realty

rennie