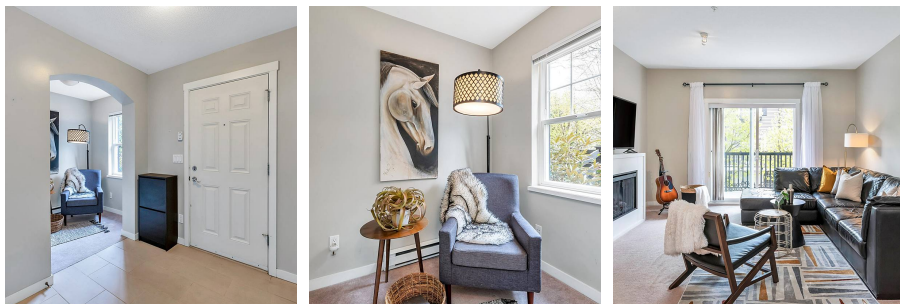


52 19572 Fraser Way, Pitt Meadows

\$849,900



Nestled in the beautiful neighbourhood of Osprey Village – the best little community on the Fraser River. This charming & quiet home boasts a spacious bright 2 bed + DEN, 2 baths w/ 9ft ceilings & lots of natural light. Large Open Concept Liveable area, a bright & open layout Kitchen, & a spacious Master Bedroom w/ Peekaboo Mountain views. Other features include a private den with space to work from home, a large West-Facing patio designed for entertaining, and a Red Brick Courtyard Front Door with cozy Fenced Yard w/ one-of-a-kind Curb-Appeal. Tandem 2 vehicles Garage w/ partial conversions allowed. This Georgian-style complex is very sought-after & truly a lovely place to live w/ steps to trails, café, shops & community center. Easy access to Hwy 1 & West Coast Express. Pets/rentals ok!

KEY INFORMATION

MLS® R2691604

Residential Attached

South Meadows

2 Bedrooms

2 Bathrooms

1,443 SF

FEATURES

Year Built: 2008

Views: GREENBELT/PEEKABOO MOUNTAINS

Listed By: Royal LePage West Real Estate Services

rennie