

203 9080 Mary Street, Chilliwack

\$259,900



Welcome to Hodgins Manor. This is a 50 + mature building, pets with restrictions, guest suite available. One large bdrm, totally renovated, Walk In tub, new stainless fridge, newer; washer, dryer, stove, dishwasher. Located to all amenities: Shopping, Hospital, Leisure Centre Art Center, Banks, Transit, Townsend Park. Looking towards south east view, updated light fixtures, walking distance to shopping malls, hospital, banking, groceries, secure under building garage parking, very reasonable monthly fee, over all a peaceful building & great location to reside at.

KEY INFORMATION

MLS® R2691728

Residential Attached

Chilliwack

1 Bedroom

1 Bathroom

786 SF

\$249.20 Maintenance Fees

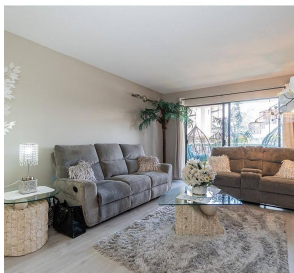
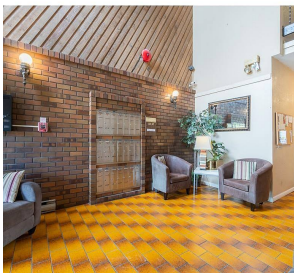


FEATURES

Year Built: 1976

Views: Mountain

Listed By: Pathway Executives Realty Inc.



rennie