

22 14850 100 Avenue, Surrey

\$442,500



Spacious & open 2 bedroom and 2 bathroom in a gated community. Upper floor end unit. Located in the heart of Guildford. This home is age restricted to 45+ and walking distance to Guildford Town Centre, Green Timbers Park, and great access to transit and much more. New windows replaced in 2021. Hot Water Tank replaced new November 2016. Comes with 1 covered parking spot. Very quiet and friendly neighbourhood complex. Open House May 28th & May 29th 2022 from 1pm - 3pm.

KEY INFORMATION

MLS® R2691830

Residential Attached

Guildford

2 Bedrooms

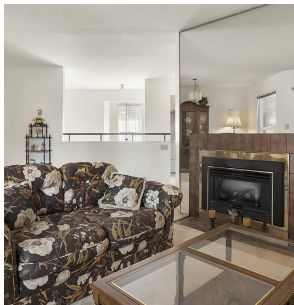
2 Bathrooms

1,305 SF

FEATURES

Year Built: 1986

Listed By: Stonehaus Realty Corp.



rennie