

101 652 Whiting Way, Coquitlam

\$1,195,000



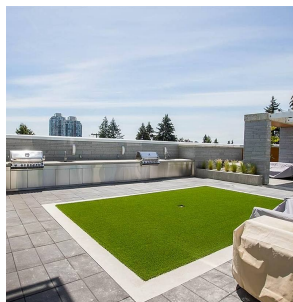
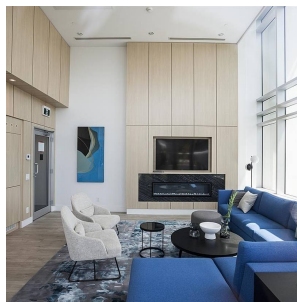
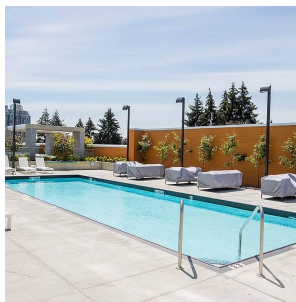
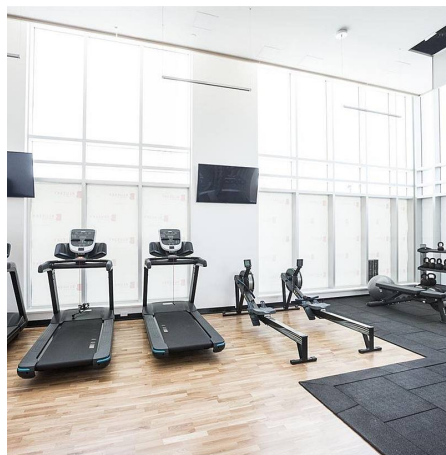
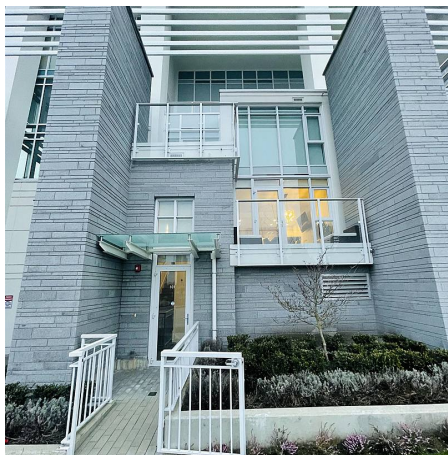
One of the very few spacious townhomes in Marquee at Lougheed Heights by Bosa. Three-levels layout for independent living. Bright living and dining rooms with modern kitchen on main. Three bedrooms on two upper floors. Both main and 2nd levels have their own access to elevator and amenities. Just a few steps away from your bedrooms to gym and swimming pool. A huge balcony on 3rd level. 2 parking stalls. Amenities include fully equipped gym, outdoor pool, BBQ stations and dining area, lounge, and concierge. Minutes walk to Skytrain station, Lougheed Town Centre, grocery stores, and restaurants. 2 side by side parking, 1 large locker. don't miss it!!! Appointment required for showing Please contact listing agent

KEY INFORMATION

MLS® R2691917
Residential Attached
Coquitlam West
3 Bedrooms
3 Bathrooms
1,586 SF

FEATURES

Year Built: 2020
Listed By: Luxmore Realty



rennie