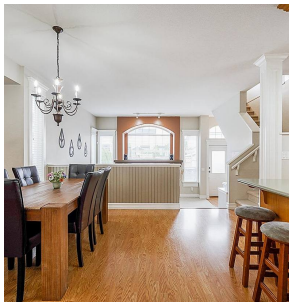
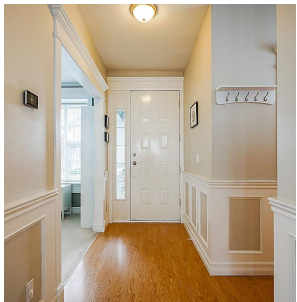
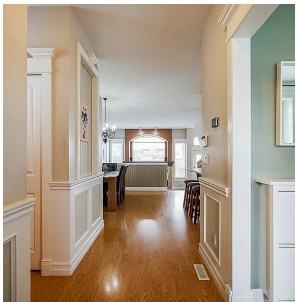


# 6665 184a Street, Surrey

\$1,125,000



Rarely available home in one of the most sought-after neighborhoods. Just a stone's throw away from Hillcrest Elem, this home is perfect for your growing family. Walk into this open layout off your front covered porch & immediately take in the huge windows basking the whole house w/ light. The spacious main floor boasts an office perfect for working from home or kids study, a large kitchen & sunken living room big enough for the holidays. Upstairs, a large mstr bdrm that easily accommodates a king-size bed, as well as a walk-in closet & 2 other great-sized rooms. Downstairs is open for your ideas w/ a huge unfinished basement pre-plumbed for a bathroom & the perfect place for additional bdrms or living space. Central A/C, gas firepit hookup, back lane, lots of street park & NO STRATA!

## KEY INFORMATION

MLS® R2691018

Residential Detached

Cloverdale

3 Bedrooms

3 Bathrooms

2,426 SF

2,486 SF Lot

## FEATURES

Year Built: 2001

Listed By: Sutton Group-West Coast Realty (Surrey/120)

rennie