

#101 14605 Mcdougall Drive, Surrey

\$799,999



Presenting this beautiful GROUND LEVEL CORNER UNIT WITH OWN FENCED YARD. PRIME LOCATION in South Surrey/ White Rock. The suite offers 2 bedrooms and 2 full bathrooms with 998 Sq ft. The ceilings are 9'. Privately fenced MASSIVE 550 sqft+ elevated yard and 2 patios. The master room includes ensuite, walk-in closet and the 2ND PATIO. Living room offers an marvelous 23 feet reclaimed barn wood feature wall, with 72" fireplace in custom-built mantle. The Rustic barn door feature for the laundry area brings in class. Beautiful white nougat quarts counter in Kitchen with undermount sinks. Beautiful wide-plank wood grain laminate. Also 2 underground parking spots(outlet for EV charging) as well as a private storage locker.

KEY INFORMATION

MLS® R2691969

Residential Attached

King George Corridor

2 Bedrooms

2 Bathrooms

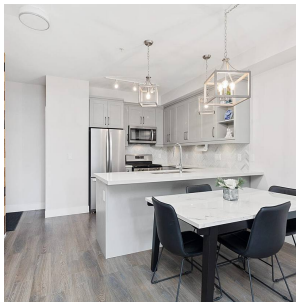
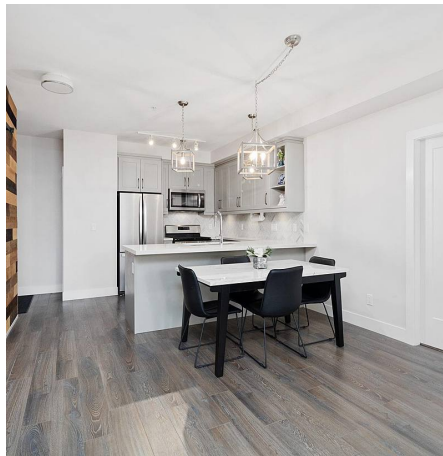
998 SF

\$363.49 Maintenance Fees

FEATURES

Year Built: 2019

Listed By: RE/MAX Blueprint Realty



rennie