

# 304 250 Columbia Street, New Westminster

\$898,000



Welcome to the newly constructed Brooklyn Views. This gorgeous townhouse project boasts almost 1,300 square feet of luxurious living space over 2 levels. The foyer welcomes you into the home with towering ceilings, measuring over 20 feet. This townhouse is nothing short of luxurious, fitted with air conditioning and high end finishing's. Hardwood flooring runs throughout, granite waterfall countertops and backsplash in the kitchen paired with real oak cabinets. The elegance is matched in the bathrooms with the same oak materials and spa inspired design. Enjoy panoramic water views from private outdoor patios off of the living room and master bedroom.

## KEY INFORMATION

MLS® R2692123

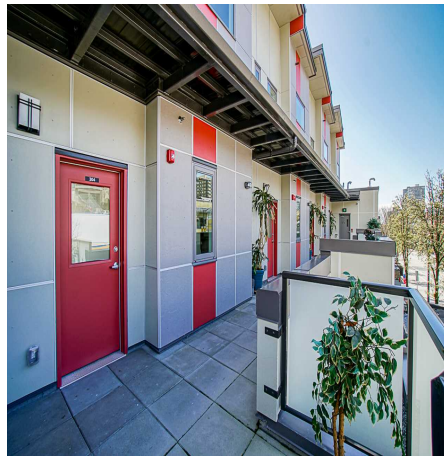
Residential Attached

Quay

2 Bedrooms

3 Bathrooms

1,279 SF



## FEATURES

Year Built: 2021

Views: RIVER/MOUNTAINS/CITY/BRIDGE

Listed By: Sutton Centre Realty



rennie