

820 Victoria Drive, Port Coquitlam

\$3,388,000



Stunning CUSTOM Architect-designed quality built home where city meets the mountain-side! Beautiful & thoughtfully planned, this home is ideal for anyone who loves family dinners, movie nights & entertaining friends. Features include wide-plank hardwood thru-out main living, 9'-10' ceilings throughout, professional series appliances in gourmet kitchen with a huge island & spice kitchen with walk-in pantry to store all your dry goods, main floor bedroom/guest-room with ensuite on main, large covered deck offering bonus outdoor living space! REST & RELAX in Primary bedroom with mountain views, large sundeck, spa ensuite & a well organized walk-in closet. 2 bed legal suite below & detached legal coach house in laneway with its own garage. Shops/transit/amenities/schools/trails close by.

KEY INFORMATION

MLS® R2691708

Residential Detached

Oxford Heights

10 Bedrooms

8 Bathrooms

4,938 SF

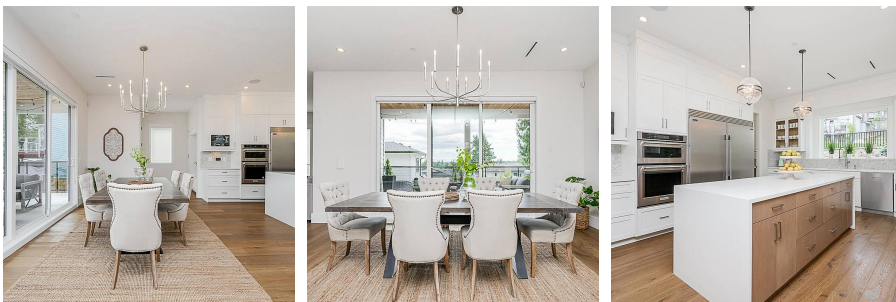
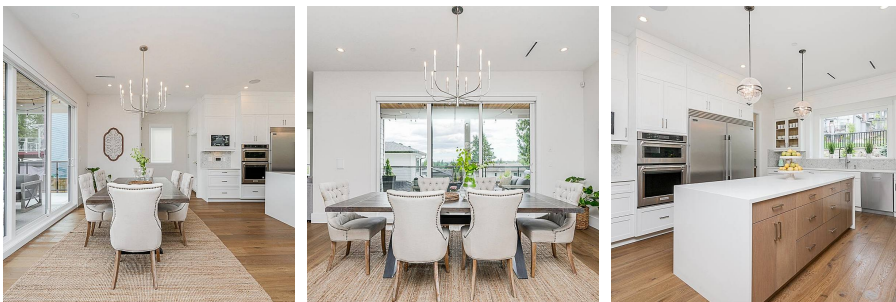
8,113 SF Lot

FEATURES

Year Built: 2019

Views: Mountain

Listed By: RE/MAX Little Oak Realty (Surrey)



rennie