

# 8881 143a Street, Surrey

\$1,699,000



Fantastic basement entry home that backs onto greenbelt with West facing backyard! Basement lays out nicely with suite potential. Neat, clean, & well maintained. Home on quiet cul de sac with a large flat 7120 sqft lot. Close to Shopping, Transit, Schools and Parks. Short walk to Gurdwara Nanaksar, Green Timbers Elementary, Bear Creek Park, Surrey Art Gallery & Civic Theatres. Centrally located. Fantastic upgrades with significant remodelling. A fabulous kitchen and huge island with quartz countertops, perfect for entertaining. Two gas fireplaces to keep you cozy. Huge private backyard overlooking the greenbelt, amazing for those summer BBQ's. Gated yard entry, park your boat on the side. Too many features to mention. Have your agent book a showing today!

## KEY INFORMATION

MLS® R2691151

Residential Detached

Bear Creek Green Timbers

4 Bedrooms

3 Bathrooms

2,167 SF

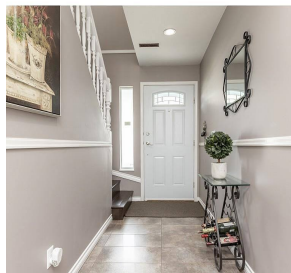
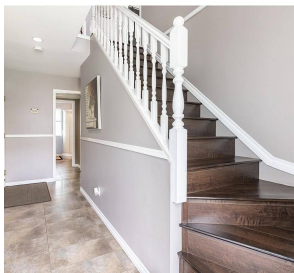
7,120 SF Lot

## FEATURES

Year Built: 1986

Views: Green Belt Behind

Listed By: Properly Homes



rennie