

# 21 2138 Salisbury Avenue, Port Coquitlam

\$1,088,000



SALISBURY LANE! Gorgeous, former show home, 3 level townhome with private entry. 15'x12' sq.ft front yard w/ view of Burke Mountain & large covered front porch. Large 4 bdrm, 3 bth, 9 ft. ceilings, quartz counter tops, huge double box s/s sink, wine fridge, built-in microwave, white subway tile, media room, custom closet organizers, full-sized W/D, wired for security system. Cement board siding, gables & stone elements. Luxury vinyl plank, double tandem car garage, half a block walk to French immersion middle school, short drive to transit, recreation, shopping & restaurants, 25km walking trails along the Coquitlam River, close proximity to skytrain.

## KEY INFORMATION

MLS® R2692417

Residential Attached

Glenwood

4 Bedrooms

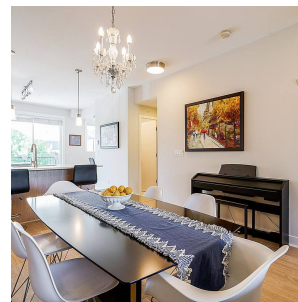
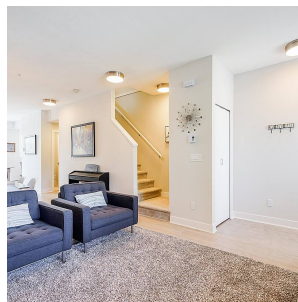
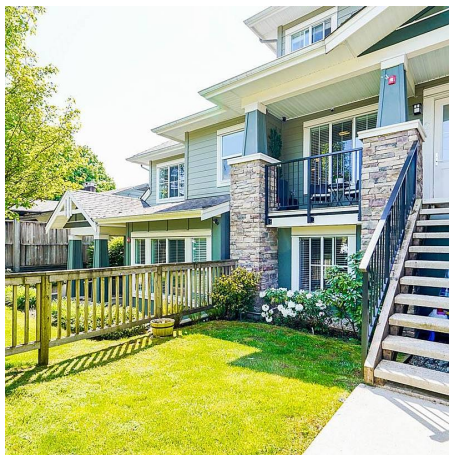
3 Bathrooms

1,520 SF

## FEATURES

Year Built: 2015

Listed By: rennie & associates realty ltd.



**Azi Mojdehi**  
778.994.9335  
amojdehi@rennie.com  
rennie.com/azimojdehi

**rennie**