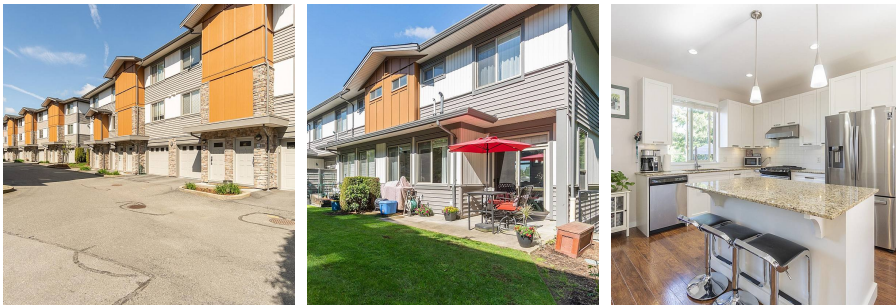


# 39 34248 King Road, Abbotsford

\$849,900



Immaculate 3 bdrm, 3 bath end unit with a huge double garage. Sides onto greenbelt with a large front deck & a patio opening onto huge grassy yard area, ideal for kids & pets. Open concept great room plan, 9' ceilings, white shaker cabinets, granite countertops, white tile backsplash, commercial grade hood fan, large centre island with eating bar, floor-ceiling fireplace feature with new fireplace, hand-scraped laminate thru-out, LED lighting. 3 bdrms up, large mstr bdrm with 3 pce ensuite w/ 5' shower. Double garage has built-in shelving, 240V plug for an EV charger & extra space for work bench or storage. Strata allows parking in front of garage within specified area. Super popular complex... kid & pet friendly, 2 dogs allowed, rentals allowed, playground, steps to UFV & freeway access.

## KEY INFORMATION

MLS® R2690320

Residential Attached

Poplar

3 Bedrooms

3 Bathrooms

1,431 SF

## FEATURES

Year Built: 2012

Listed By: Sutton Group-West Coast Realty (Abbotsford)

rennie