

36762 Carl Creek Crescent, Abbotsford

\$1,459,000



Welcome to Sumas Mountain! Modern exterior design finished with a beautiful combination of hardy and stone. Interior boasts open main floor living, high ceilings, large kitchen island, and beautiful great room perfect for family gatherings and lots of natural light. Upstairs features 3 bedrooms and a spacious flex area. Master has huge walk in closet, spacious ensuite with double sinks and access to a deck. Basement is fully finished with 2 bedrooms unauthorized suite with upgraded Samsung Appliances. Beat the heat with upgraded central A/C. Fully fenced back yard added. One of the nicest homes in the development. Close to lots of hiking & biking trails, minutes away from Ledgeview Golf course, shopping, Hwy #1 & U.S. Border. Auguston Traditional Elementary school catchment.

KEY INFORMATION

MLS® R2692018

Residential Detached

Abbotsford East

5 Bedrooms

4 Bathrooms

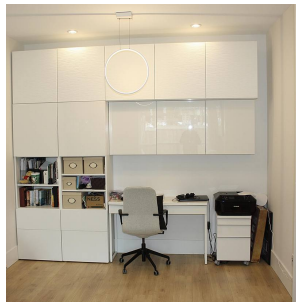
2,697 SF

3,358 SF Lot

FEATURES

Year Built: 2020

Listed By: Homelife Advantage Realty (Central Valley) Ltd.



rennie