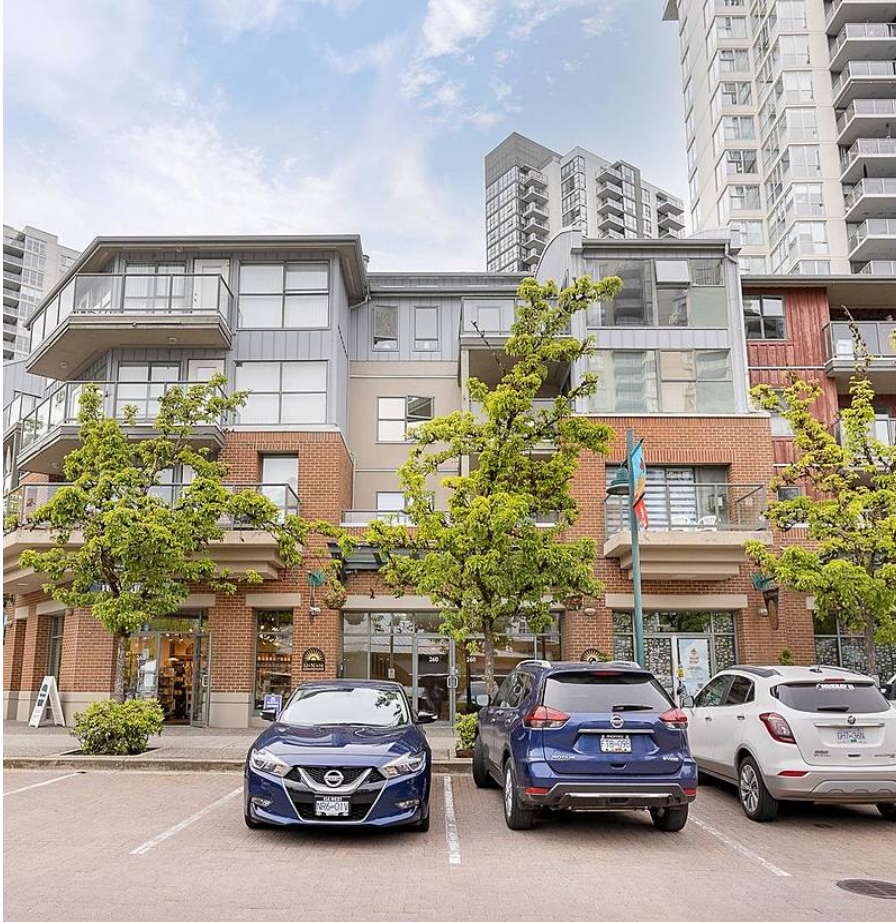


# 209 260 Newport Drive, Port Moody

\$699,000



Welcome to “The McNair” located in popular Newport Village in the heart of Port Moody. This COZY and BRIGHT 889 sqft 2 bed/2bath has been partially updated and is move-in ready! LARGE white kitchen with plenty of counter-space and storage. Laminate flooring throughout. LARGE Master with 4-piece ensuite and walk in closet. EXTRA large balcony. BONUS 2 covered parking stalls. Well maintained building. Strata Fees include hot water. Centrally located within walking distance to shopping, restaurants, recreation, transit and many more amenities.

## KEY INFORMATION

MLS® R2692340

Residential Attached

North Shore Port Moody

2 Bedrooms

2 Bathrooms

889 SF

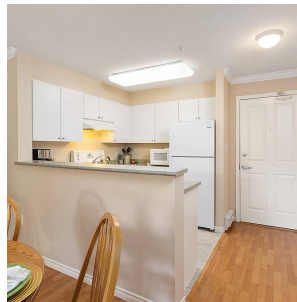
\$508.90 Maintenance Fees



## FEATURES

Year Built: 1999

Listed By: eXp Realty (Branch)



rennie