

3709 1178 Heffley Crescent, Coquitlam

\$848,800



Beautiful 2BR + 2BA plus den unit in the heart of Coquitlam with panoramic views of the city, mountain, and Lafarge lake. Fully functional layout with laminate flooring in the main living area and stunning kitchen cabinetry with modern appliances. Large windows to capture that incredible view and a fireplace to bundle up by on those rainy days in Vancouver. The Unit has two parking stalls and one Locker. Open house Saturday Jun 11th by appointment only.

KEY INFORMATION

MLS® R2692865

Residential Attached

North Coquitlam

2 Bedrooms

2 Bathrooms

1,023 SF

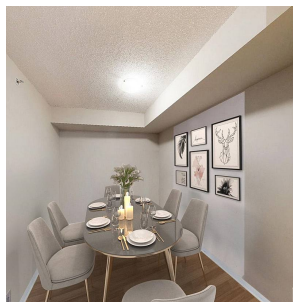
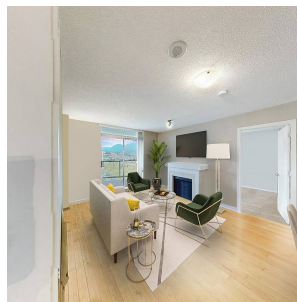
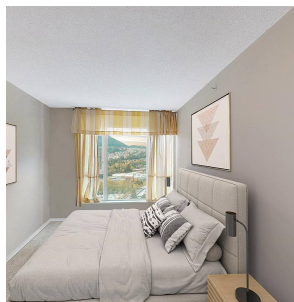
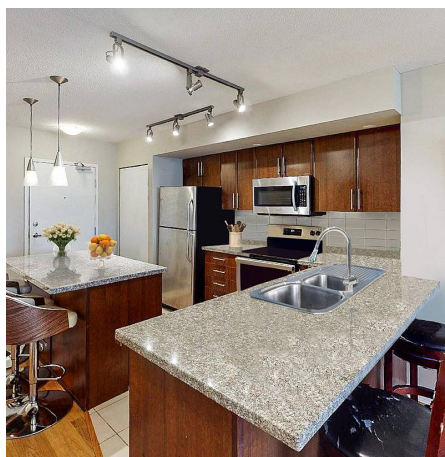
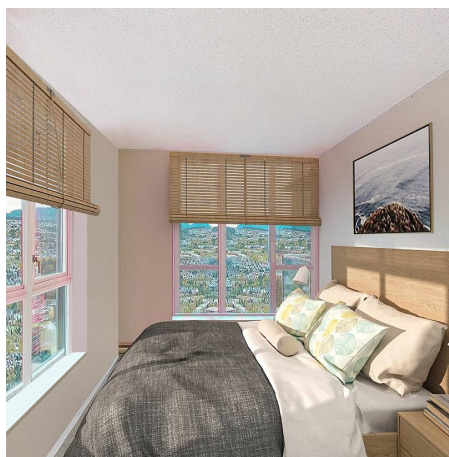
\$317.41 Maintenance Fees

FEATURES

Year Built: 2008

Views: Mountain, City, & Lafarge Lake

Listed By: Swift Realty Ltd.



rennie