

# 2959 168 Street, Surrey

\$3,999,999

## 959 168 STREET SURREY



- **PROPERTY SIZE: 1.02 A**
- **PLA APPROVED FOR 2 |**  
**LOT 1 - 21506 SQ FT**  
**LOT 2 - 21549 SQ FT**
- **LOTS WITH MOUNTAIN**
- **WALK OUT BASEMENT**

**RE/MAX** Colonial Pacific  
Office Individually Owned and Operated

**LENA XU**  
PERSONAL REAL ESTATE CORPORATION

778.388.6  
www.lenax

**BUILDERS AND INVESTORS ALERT!** 2 PLA-approved lots with Mountain Views and a walk-out basement in North Grandview Heights.

Lot-1-21506.29 sq ft Lot-2-21549.35 sqft. Build your dream home in a fast-developing neighborhood with the best private school (Southridge) and newly opened public schools (Grandview Heights Secondary School), walking distance to Grandview Aquatic Centre, minutes to Morgan Creek Golf Course, easy access to HWY 99 and U.S. Border. The current house was recently renovated with 2 rental suites. Good for income while you are working on your drawings.

### KEY INFORMATION

MLS® R2692665

Residential Detached

Grandview Surrey

4 Bedrooms

4 Bathrooms

2,704 SF

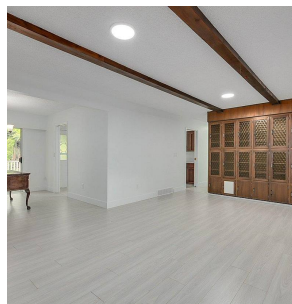
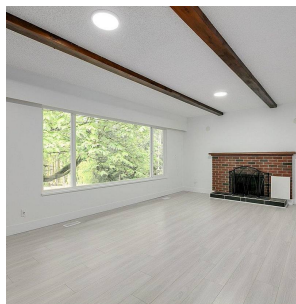
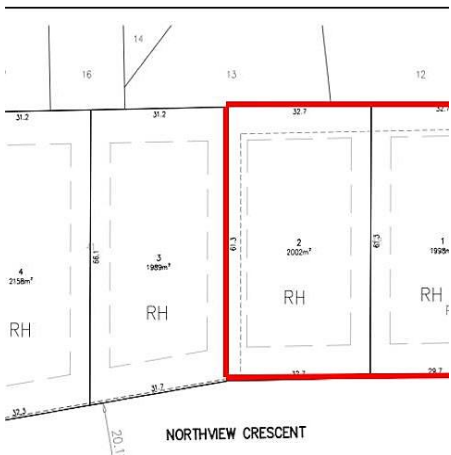
44,288 SF Lot

### FEATURES

Year Built: 1974

Views: MOUNTAIN VIEW

Listed By: RE/MAX Colonial Pacific Realty



**rennie**