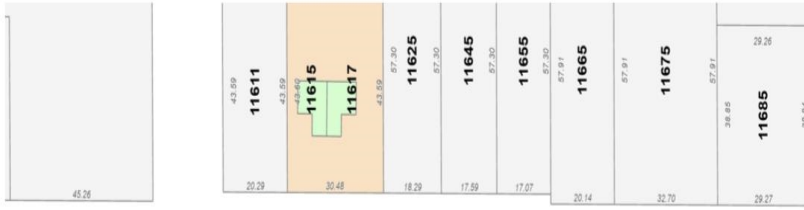


11646 80 Avenue, Delta

\$2,499,000



Data Accuracy Not Guaranteed. City of Delta

May 25, 2022



Data Accuracy Not Guaranteed. City of Delta

LAND ASSEMBLY! Sold as is where is as part of a Land Assembly In-conjunction with 11636/11626/11610 80 Avenue. Total Combined area 37,077sqft. Current Zoning RD-3 and Area Plan Designation ISF (ND). Buyers and their agents to do their own due diligence with the City of Delta/Architect.

KEY INFORMATION

MLS® R2692362

Residential Detached

Scottsdale

4 Bedrooms

1 Bathroom

1,220 SF

9,834 SF Lot

FEATURES

Year Built: 1958

Listed By: Sutton Group Seafair Realty