

# 5920 168a Street, Surrey

\$1,879,000



Well-built, beautiful, 3-level stucco home, with fully-finished Suite, on quiet, no-through street in prestigious Richardson Ridge. 1316 sq.ft. fully self-contained Basement Suite (unauthorized) can be configured as 1, 2 or 3 Bedrooms with option for upstairs use. Radiant hot water heat. Huge remodelled kitchen with quartz counters and new appliances, perfect for entertaining. Vaulted ceilings in living Room. Den off entrance. 4 spacious upstairs bedrooms. Double car garage with high ceiling. Generous RV parking on side. Private back yard with patio and gas connection for BBQ. 2 blocks to School easy access to #10 highway Active park w. tennis courts within blocks openhouse 19 June 2 to 4

## KEY INFORMATION

MLS® R2692829

Residential Detached

Cloverdale

7 Bedrooms

5 Bathrooms

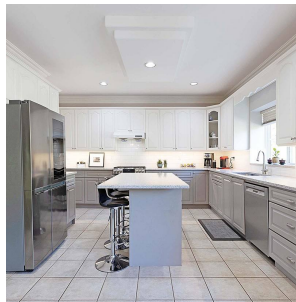
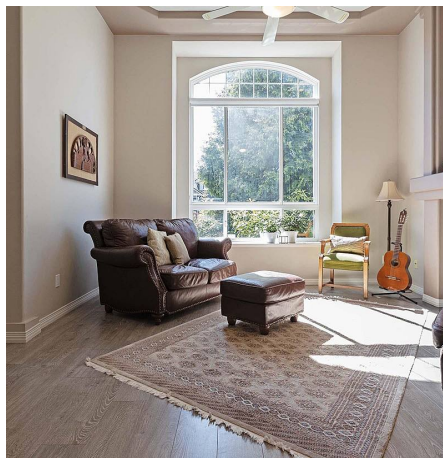
4,043 SF

6,049 SF Lot

## FEATURES

Year Built: 2000

Listed By: Homelife Benchmark Realty Corp. (Branch)



rennie