

2818 St George Street, Port Moody

\$3,650,000



TOWNHOUSE DEVELOPMENT

OPPORTUNITY! Incredible opportunity to purchase a boutique 8 townhouse development in Port Moody Centre. Situated on a 8,712 SF lot, a proposed plan has been drafted for 8 townhome units ranging from 922 SF to 1,160 SF. This is a perfect development for a boutique developer or a single family developer looking to explore the multi-family space. The location is ideally situated only 3 blocks from the Moody Centre West Coast Express and Sky Train Stations. Only 1 block away from Moody Elementary School. More detailed information is available for qualified buyers.

KEY INFORMATION

MLS® R2693375

Land Only

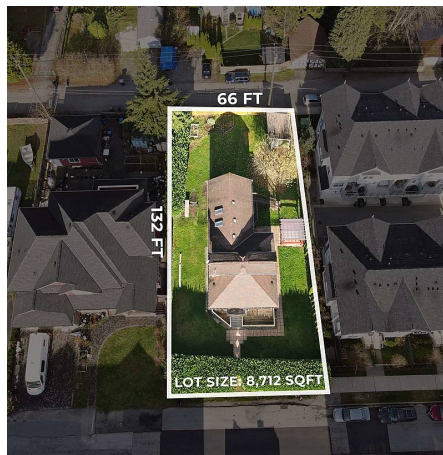
Port Moody Centre

0 Bedrooms

0 Bathrooms

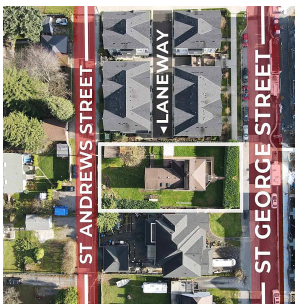
0 SF

8,712 SF Lot



FEATURES

Listed By: Angell, Hasman & Associates Realty Ltd.



rennie