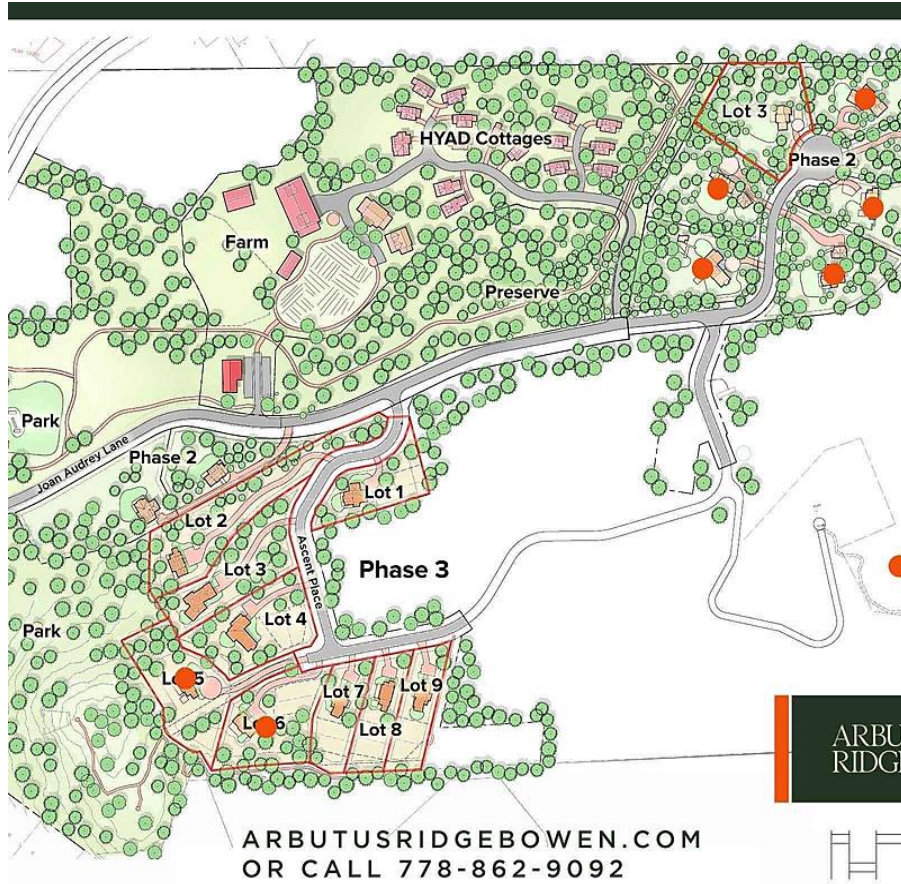


P3-03 Lot Arbutus Ridge, Bowen Island

\$849,900



ARBUTUS RIDGE ON BOWEN ISLAND sits above King Edward Bay and comprises 83 acres and 34 residential single-family lots, which 7 are available in this release. Estate lots are serviced by municipal water and hydro. Transportation links include the Translink bus from the property to downtown. * 1/2 ACRE PLUS ESTATE LOTS * SOUTHERN EXPOSURE SET WITHIN PARKLAND * PERMANENT BEACH ACCESS * WEST VANCOUVER SCHOOL DISTRICT * MINUTES FROM ELEMENTARY SCHOOLS * TRANSLINK SERVICE TO DOWNTOWN VANCOUVER * HOURLY FERRY TO HORSESHOE BA Phase 3 - Lot 3 is 0.89-acre residential estate lot in a flat to graded forest area with a sunset ocean view.

KEY INFORMATION

MLS® R2693410

Land Only

Bowen Island

0 Bedrooms

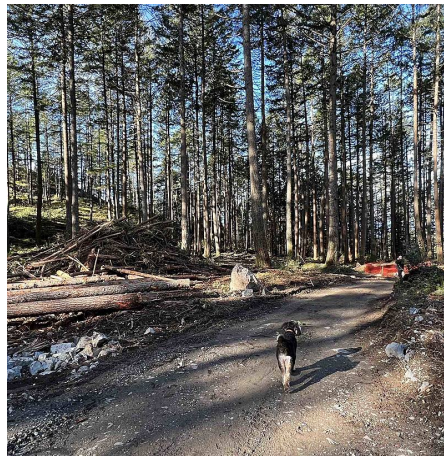
0 Bathrooms

0 SF

38,750 SF Lot

FEATURES

Listed By: Engel & Volkers Vancouver



rennie