

# 314 13925 Fraser Highway, Surrey

\$700,000



Welcome to the beautiful VERVE complex. Conveniently located close to Skytrain, transportation, recreation, schools, parks, SFU. this CORNER unit features 2 large bedrooms, 2 bathrooms with a spacious open layout. Beautiful kitchen with stainless steel appliances and a large pantry. lots of natural light throughout this unit with large windows and new washer and dryer, private deck for BBQ. 2 parking spaces in an underground parkade and storage locker. Situated in a quieter location of the complex off the main street. Fabulous amenities including gym, lounge area and guest suite.

## KEY INFORMATION

MLS® R2691450

Residential Attached

Whalley

2 Bedrooms

2 Bathrooms

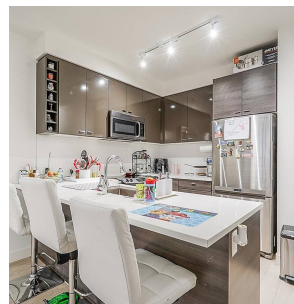
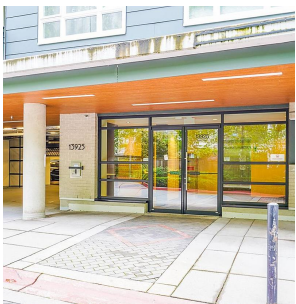
938 SF

\$325.37 Maintenance Fees

## FEATURES

Year Built: 2014

Listed By: SRS Panorama Realty



rennie