

702 4888 Brentwood Drive, Burnaby

\$749,000



Fitzgerald - One of Burnaby's most sought after buildings developed by the renowned Ledingham McAllister Development. This highly coveted two bedroom corner unit is ideally situated in the heart of Burnaby's newest Luxury Zone and just steps to the city's most select restaurants. This unit features an open concept kitchen with granite countertops, Kitchen Aid stainless steel appliances, porcelain tile backsplash, floor to ceiling windows. Building amenities offer lounge and pool table, fitness and exercise centre with spa, conference room, and outdoor terrace. Walking distance to Brentwood Mall, skytrain station, and minutes away from BCIT and SFU

KEY INFORMATION

MLS® R2693571

Residential Attached

Brentwood Park

2 Bedrooms

2 Bathrooms

909 SF

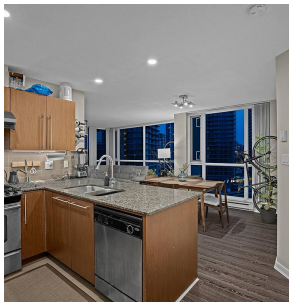
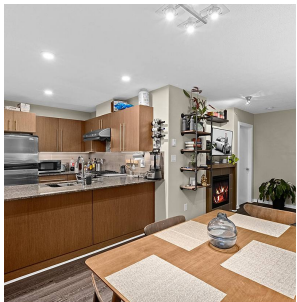
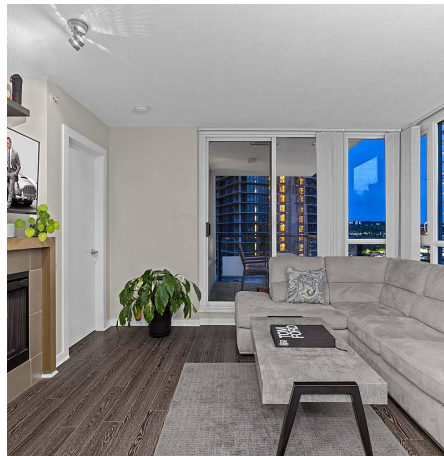
\$423.24 Maintenance Fees

FEATURES

Year Built: 2008

Views: City Views

Listed By: Angell, Hasman & Associates Realty Ltd.



rennie