

1402 288 Ungless Way, Port Moody

\$810,000



Bright NE facing 2 bed, 2 bath corner unit in upscale Newport Village in renowned Crescendo tower by Bosa. Unobstructed mountain and city views from all windows & balcony! Rich hwd all over, in suite laundry, shaker wood kitchen cabinets, SS appliances, granite countertops and breakfast bar island in an open floor plan. Spacious MB with large walk-in closet. Experience resort living with elegant grand lobby and club house amenities incl. gym, social lounge, hot tub/steam/sauna and bike room. Close to Port Moody Rec Center/Library, Skytrain, Rocky Point Park, trails and Eagle Ridge Hospital. 1 prkg & 1 storage locker!

KEY INFORMATION

MLS® R2693736

Residential Attached

North Shore Port Moody

2 Bedrooms

2 Bathrooms

1,102 SF

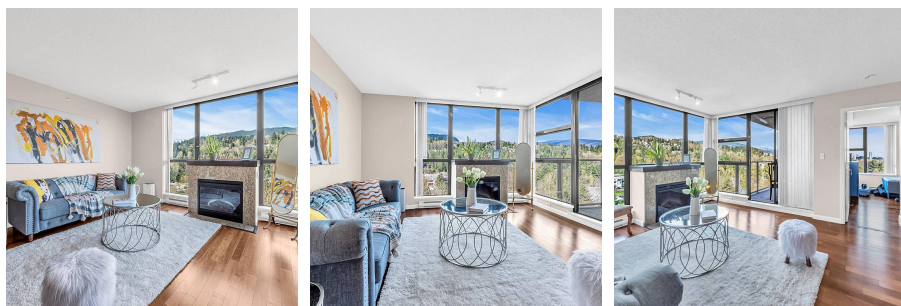
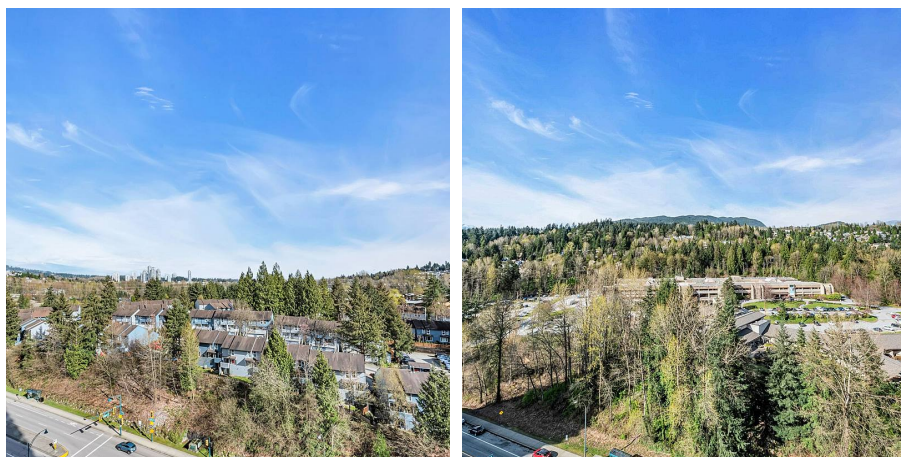
\$380.95 Maintenance Fees

FEATURES

Year Built: 2008

Views: Mountain and City Views

Listed By: RE/MAX Crest Realty



rennie